



04

Clever Frame®
ACCESORIES

Modular sales support architecture

LIGHT, ALUMINUM FRAMES

are the core of the Clever Frame® system, but a plethora of accessories allows you to multiply its functionality. We present to you the catalog of accessories and all elements that you can outfit your system with. In the following pages you will find information on all of our accessories, links to websites with manuals and examples of applications. If you should have any questions, please contact us. We will advise you how to expand your Clever Frame® set in the best possible way.

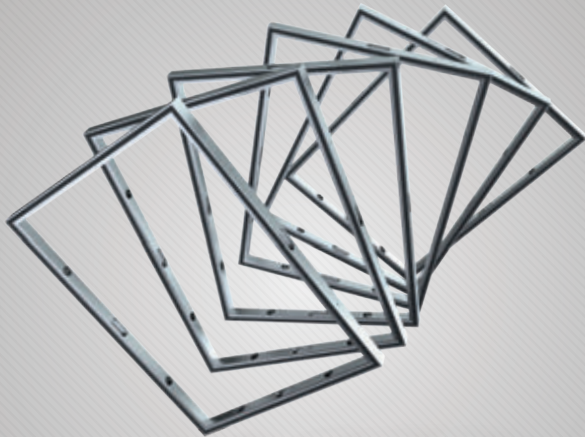


TABLE OF CONTENTS

1. Connectors
2. Graphic panels
3. R-frame / Curved frame
4. Technical frame
5. Door
6. Connecting profiles
7. Hinges
8. Lower lateral support profiles
9. Bolted foot
10. Upper lateral support profiles
11. Mounting rings
12. Transport case
13. Trolley
14. Transport bags
15. Shelf
16. Halogen lamp
17. TV holder
18. Leaflet holder
19. Leaflet holder for the lateral support profile
20. Slanting leaflet holder for the TF
21. Straight leaflet holder for the TF
22. Counter 110 / 135 cm
23. Promo 1 counter

CLEVER FRAME® FRAMES

BASIC SYSTEM COMPONENTS



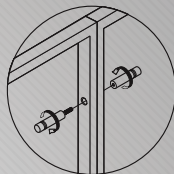
Clever Frame® frames are available in many dimensions, the most popular being: C1 - 100 x 100 cm, D1 - 100 x 75 cm and D2 - 125 x 100 cm. If you need information regarding other frame sizes please contact us or look into the Clever Frame® catalog.

www.cleverframe.com

1

CLEVER FRAME® CONNECTORS

BASIC SYSTEM COMPONENTS



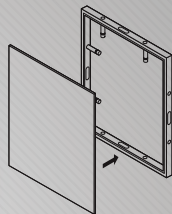
The basic system component. It allows to connect frames without any tools in a manner of seconds. Offered in sets.

www.mycleverframe.com/connectors



2

GRAPHIC PANELS BASIC SYSTEM COMPONENTS



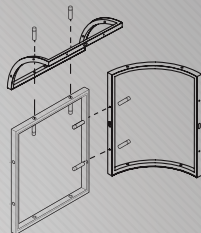
One of the most important qualities of the system is the possibility of rapid exchange of the graphic panels. We offer a wide array of panels such as PVC, Plexi and wood.

www.mycleverframe.com/panels



3

R-FRAME - CURVED FRAME BASIC SYSTEM COMPONENTS



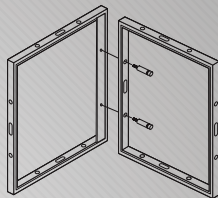
A semi-circular frame allows for many new arrangements of your stand. You are no longer limited to corner constructions and can adapt your stand to the available space in an even better way. See for yourself how much such a small change can mean.

www.myclerverframe.com/rframe



4

TECHNICAL FRAME BASIC SYSTEM COMPONENTS



The technical frame is a component of the system that greatly improves its functionality. It allows for attaching walls at any place without using the corner profiles, creating counters or hanging leaflet bars.



www.mycleverframe.com/technical_frame

5

DOOR BASIC SYSTEM COMPONENTS



Special made door frames are attached to a square corner with a hinge. This solution allows for the door to be universal. They can be used both as left and right hand side doors. This is an excellent solution for closing fair spaces such as back-rooms and storage rooms.

www.mycleverframe.com/door





CONNECTING PROFILES MOUNTING ELEMENTS



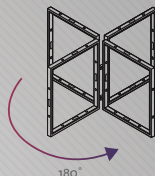
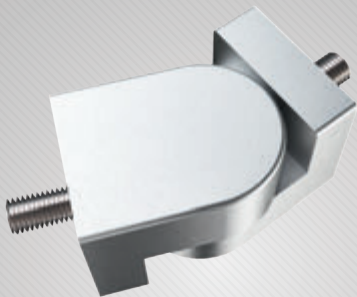
Connecting profiles are the basic mounting components of the system. They allow to connect the walls by creating right angles. The connecting profile can be used to connect 2,3 or 4 walls at once.

www.mycleverframe.com/profiles



7

HINGES MOUNTING ELEMENTS



A very versatile mounting element. It can not only be a substitute for a corner profile but it also allows for changing the angle at which the walls are connected from 0 - 180 degrees. Thanks to hinges you can change a straight wall into a corner construction within a matter of minutes eliminating the need for lateral support.

www.mycleverframe.com/hinges





LOWER LATERAL SUPPORT MOUNTING ELEMENTS



Lower lateral support is a stabilizing component recommended for straight walls or stand elements longer than 5 m. It is complemented by the upper lateral support.

www.mycleverframe.com/lower_support





BOLTED FOOT MOUNTING ELEMENTS



An innovative system of frame support - initially dedicated to Pro-mo1. The feet are mounted without any tools thanks to a vise system. They eliminate the need to use lateral support in smaller stands. They are easy to transport and considerably enlarge the functionality of the system when changing its configuration.



www.mycleverframe.com/bolted_foot

10

UPPER LATERAL SUPPORT MOUNTING ELEMENTS



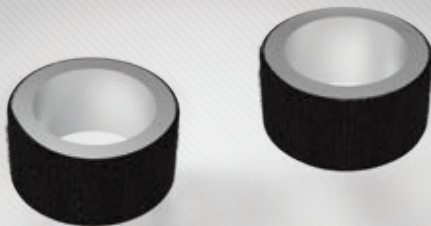
Upper lateral support profile can be used for aesthetic finishing of the ends of the stand. A special version allows for mounting leaflet holders.

www.mycleverframe.com/upper_support



1 1

MOUNTING RINGS MOUNTING ELEMENTS



Mounting rings are a support technical component used inside the frames to provide additional support to the graphic panels mounted higher than 2,5 m or vulnerable to wind. Sold in sets of 4 pcs.

www.mycleverframe.com/rings



12

TRANSPORT CASE TRANSPORT SOLUTIONS



We offer a variety of transport solutions. Our goal is to provide the customer with an opportunity to choose the solution that fits his needs best. Starting from cardboard boxes, through bags for easy transportation, to flight cases - if the system is often used and requires maximum protection.



www.mycleverframe.com/case

13

TROLLEY TRANSPORT SOLUTIONS



The trolley is a special platform allowing for attaching frames to it using our connectors and easily transporting them. The trolley can fit 6 frames as a standard.

www.mycleverframe.com/trolley



14

BAGS TRANSPORT SOLUTIONS



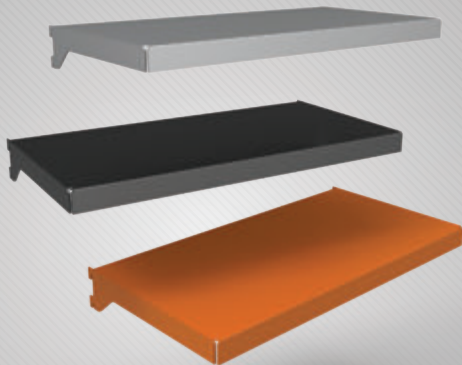
A variety of transport bags that can be ordered for many elements of the system: graphic panes, connectors, corner and lateral profiles.

www.mycleverframe.com/bags



15

SHELF PRESENTATION COMPONENTS



Easy to use shelf allows to create a presentation space with just a few quick moves. Available in the basic color can be also painted using RAL colors upon order.

www.mycleverframe.com/shelf



16

HALOGEN LAMP PRESENTATION COMPONENTS

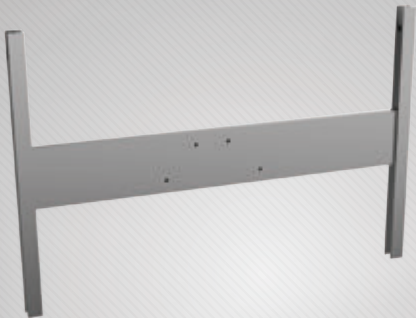


150 W halogen lamps fitted with a special easy-mount cube.
They provide an effective lighting. Offered in sets of 2.

www.mycleverframe.com/halogens



17 TV HOLDER PRESENTATION COMPONENTS



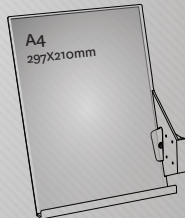
Light and easy to mount holder allowing for fitting the stand with TV sets. Offered as a set with a swivel hanger. The TV holder allows for mounting TV sets outside of the frames.

www.mycleverframe.com/tv_holder



18

LEAFLET HOLDER PRESENTATION COMPONENTS



Light, aluminum leaflet holder attached to the edge of the frames or pylons. Designed to accommodate A4 leaflets. Toolless mounting at any height of the frame.

www.mycleverframe.com/leaflet_holder



19

LEAFLET HOLDER FOR THE UPPER LATERAL SUPPORT PRESENTATION COMPONENTS



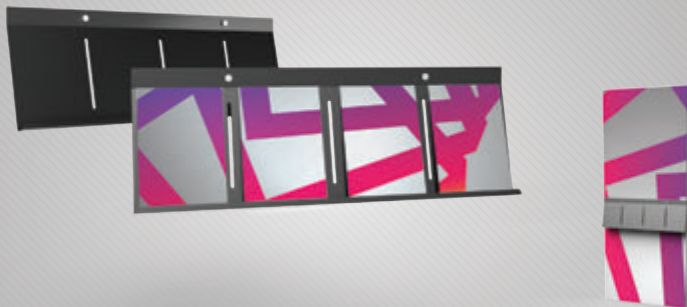
Leaflet holder for A4 materials that can be mounted on the upper lateral support profile in various configurations.

www.mycleverframe.com/leaflet_lateral



20

SLANTING LEAFLET HOLDER FOR THE TECHNICAL FRAME PRESENTATION COMPONENTS



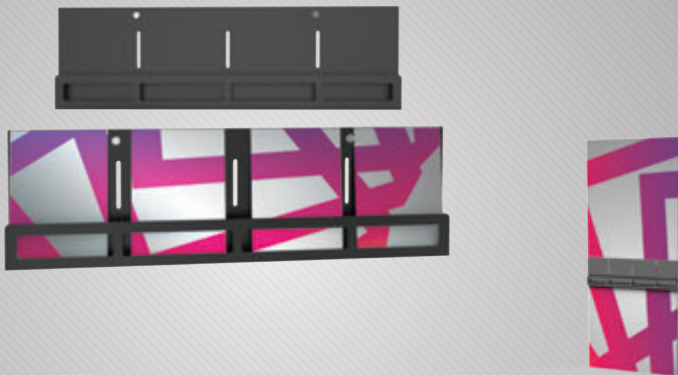
A large leaflet holder adapted for the technical frame. It allows creating interesting arrangements especially if you have a lot of printed materials. Available both slanting and straight versions.

www.mycleverframe.com/leaflet_technical



21

STRAIGHT LEAFLET HOLDER FOR THE TECHNICAL FRAME PRESENTATION COMPONENTS



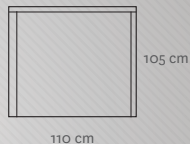
A large leaflet holder adapted for the technical frame. It allows creating interesting arrangements especially if you have a lot of printed materials. Available both slanting and straight versions.

www.mycleverframe.com/leaflet_technical2



22

COUNTER 110/135 cm PRESENTATION COMPONENTS



Presentation counters based on the standard Clever Frame® frames. Available in 2 widths depending on the type of frames used. Fitted with a counter top and a shelf.

www.mycleverframe.com/counter



23

LADA PROMO 1 PRESENTATION COMPONENTS



An element of Promo 1 system which is so popular that we now offer it as a separate solution. It consists of a D1 frame (100 x 75 cm), a table top and 2 bolted feet. An ideal, small and easy to transport solution that can be a part of a bigger Clever Frame® stand.

www.mycleverframe.com/promo_counter





Villeroy & Boch

1748

'Clever Frame® System is an intuitive and simple, and at the same time effective solution. Ease of use and various possibilities of reconfiguration are additional advantages of the product. We are pleased to recommend it to other users'



TAGHeuer
SWISS AVANT-GARDE SINCE 1860

'Modular system for creating exhibition and promotional stands offered by CleverFrame® is a great solution. In addition - what in the case of luxury goods is extremely important - this system allows you to create the image of brands we have in our portfolio in a smart and uncompromising manner'



Mercedes-Benz

'Finding a tasteful and durable solution was very important for us. We use CleverFrame® at many events. I can confirm that the system generates considerable savings allowing us to avoid unnecessary costs of disposable stands'



CITROËN

'CleverFrame® is a well-thought-out, innovative and generating savings system. We regularly use it at various events, customizing the graphics and setting up the entire wall appropriately for a specific event and its venue'



ECO FRIENDLY

Do not produce wastes.
Use multi-use promotional system.