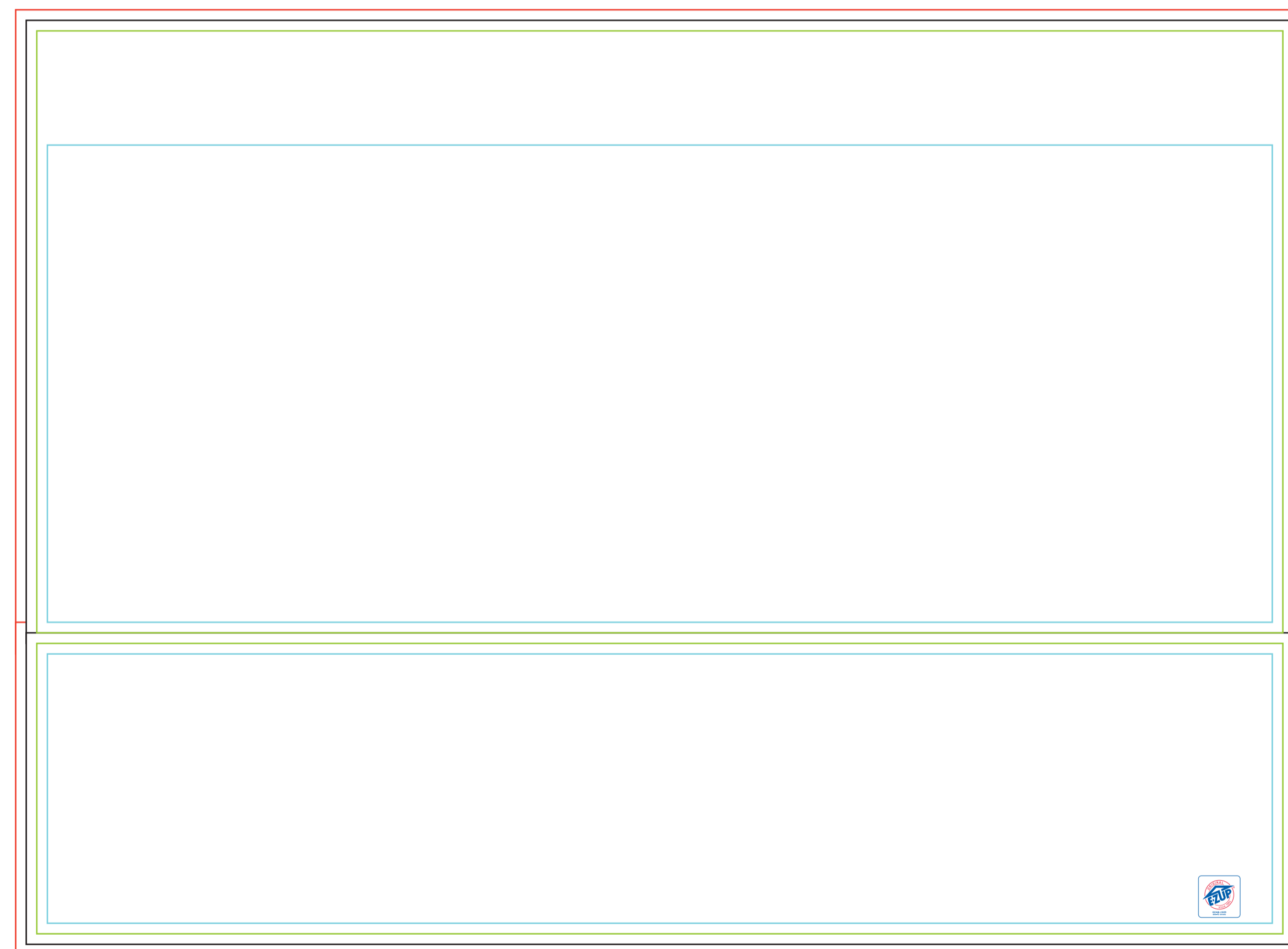




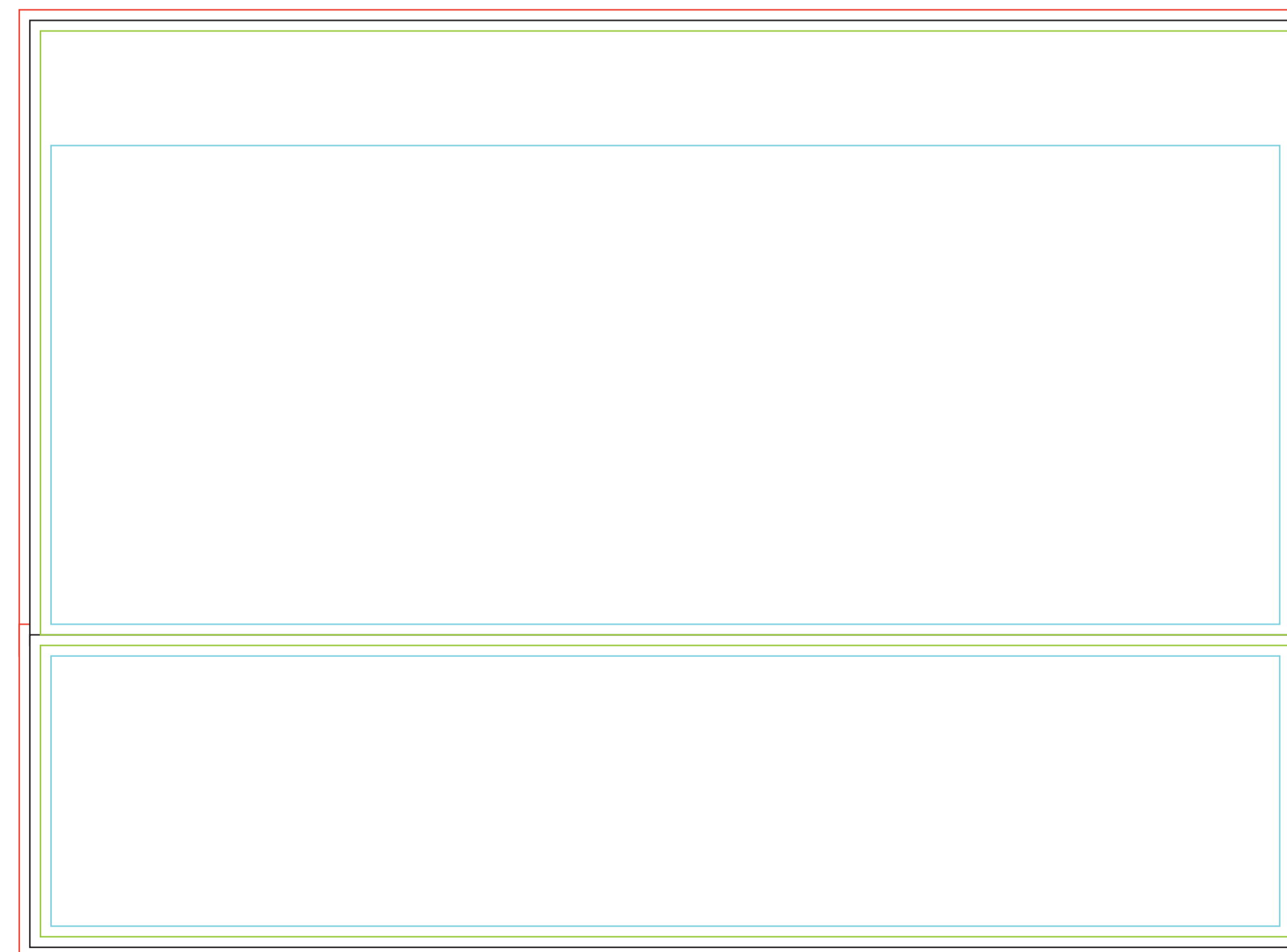
3.0m Sidewall - Double Sided

- The red line is the bleed line.
- Confection is done on the black line. This is the final net size.
- Important text and images should be placed within the blue line because of the confection.
- Please ignore this line. This is for production use only.

EXTERIOR



INTERIOR



ARTWORK REQUIREMENTS FOR GRAPHICS

Adobe Illustrator CS6 (AI, EPS, PDF) - Must convert all fonts to outline. Artwork should be supplied in vector format. All raster objects in artwork must be appropriate resolution.

Adobe Photoshop CS6 (PSD, PSB, TIF, JPG) - Must rasterize your fonts and save files as .psd (if you have layers or need transparency). Image resolution should be at 300 dpi at 10%.

All printing forms

- All fonts/text need to be outlined (inclosed like a picture)
- We cannot print Pantone colors: PMS801C - PMS814C
- When Pantone colors are not available, we print as CMYK
- RGB needs to be converted to CMYK
- All linked files need to be embedded
- All graphics are subject to review and approval before production
- Artwork should be sharp, clean and free of jagged lines/shapes

Sending files

- You may use ZIP or STUFFITS compression for multiple files (PC or MAC)
- Large files over 30MB should be sent via an FTP site such as Dropbox, Wettransfer etc. to upload your file and e-mail us the link
- Send artwork early to avoid production delays

Digital printing

- Black colors need to be changed to the CMYK value 0,0,0,100
- We cannot print Metallic or Fluor Pantone colors

Silkscreen

- All art intended for screenprint needs to be vector.
- These productions should use Pantone colors only.

Fusion

- Fusion artwork should be supplied following Adobe Illustrator or Photoshop guidelines mentioned above.



E-Z UP Europe B.V.

T +31 30 63 541 00 E _EUGraphics@ezup.com

ezup.com