

# Modulate™ Slope 2

MOD-SS-824-02

**Modulate™** consists of a set of frames made from aluminium tubes (Ø30 mm) covered with a printed tension fabric graphic. These frames can be connected together using powerful magnets inside each frame. Modulate range is available in 11 different sized formats.

- Thanks to the exclusive **MagLink** magnetic system built into the structure, you can connect the frames by simply touching them together.
- With the **Twist & Lock** system, simply position the foot under the structure, turn it and it's locked!
- The graphics are very easy to maintain thanks to the crease-resistant and machine washable textile cover. Stretch fabric with zip system.



360° MagLink connector in each pole. 4 magnets per structure



Simple assembly with numbered frame parts



Self-locking system with bungee poles and push-buttons



2 stabilising feet with Twist & Lock supplied with each frame



Central reinforcement tube (Ø 18 mm)

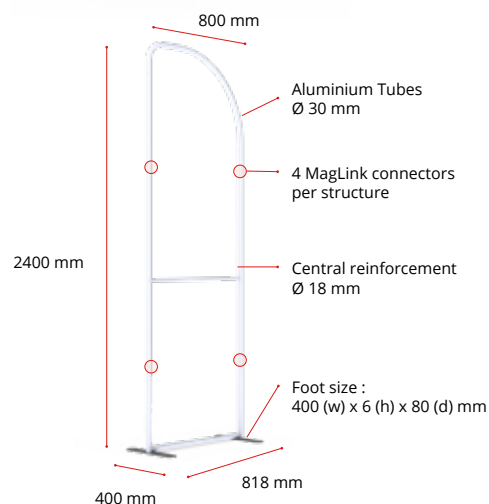


**Modulate™** carry bag with dedicated compartments for the feet and graphics



Double-sided tension fabric. Zip system

Structure informations :	
Item	Modulate Slope 2
Code	MOD-SS-824-02
Structure dimensions	818 (w) x 2400 (h) x 400 (d) mm
Graphic visual area	800 (w) x 2382 (h) mm
Boxed dimensions	1000 (w) x 245 (h) x 125 (d) mm
Structure weight	6.55 kg
Boxed weight	6.91 kg



## OPTIONAL ELEMENTS :



Modulate half feet (pair)  
MOD-HALF-FOOT-P  
218 (w) x 6 (h) x 80 (d) mm



Spot LED Flood  
LED-FLOOD-ARM-BDLK

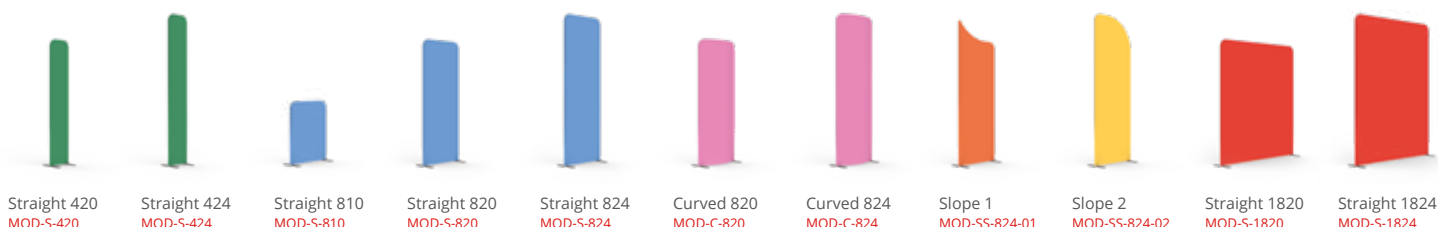


Spot LED Strip  
LED-STRIP-ARM-BDLK



Universal light fitting kit  
US901-C

## MIX & MATCH THE 11 MODULATE FRAMES :



Straight 420  
MOD-S-420

Straight 424  
MOD-S-424

Straight 810  
MOD-S-810

Straight 820  
MOD-S-820

Straight 824  
MOD-S-824

Curved 820  
MOD-C-820

Curved 824  
MOD-C-824

Slope 1  
MOD-SS-824-01

Slope 2  
MOD-SS-824-02

Straight 1820  
MOD-S-1820

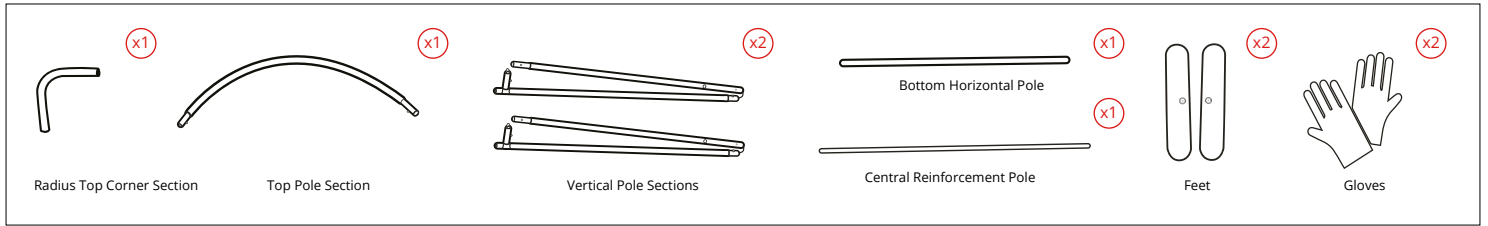
Straight 1824  
MOD-S-1824

# Modulate™ Slope 2

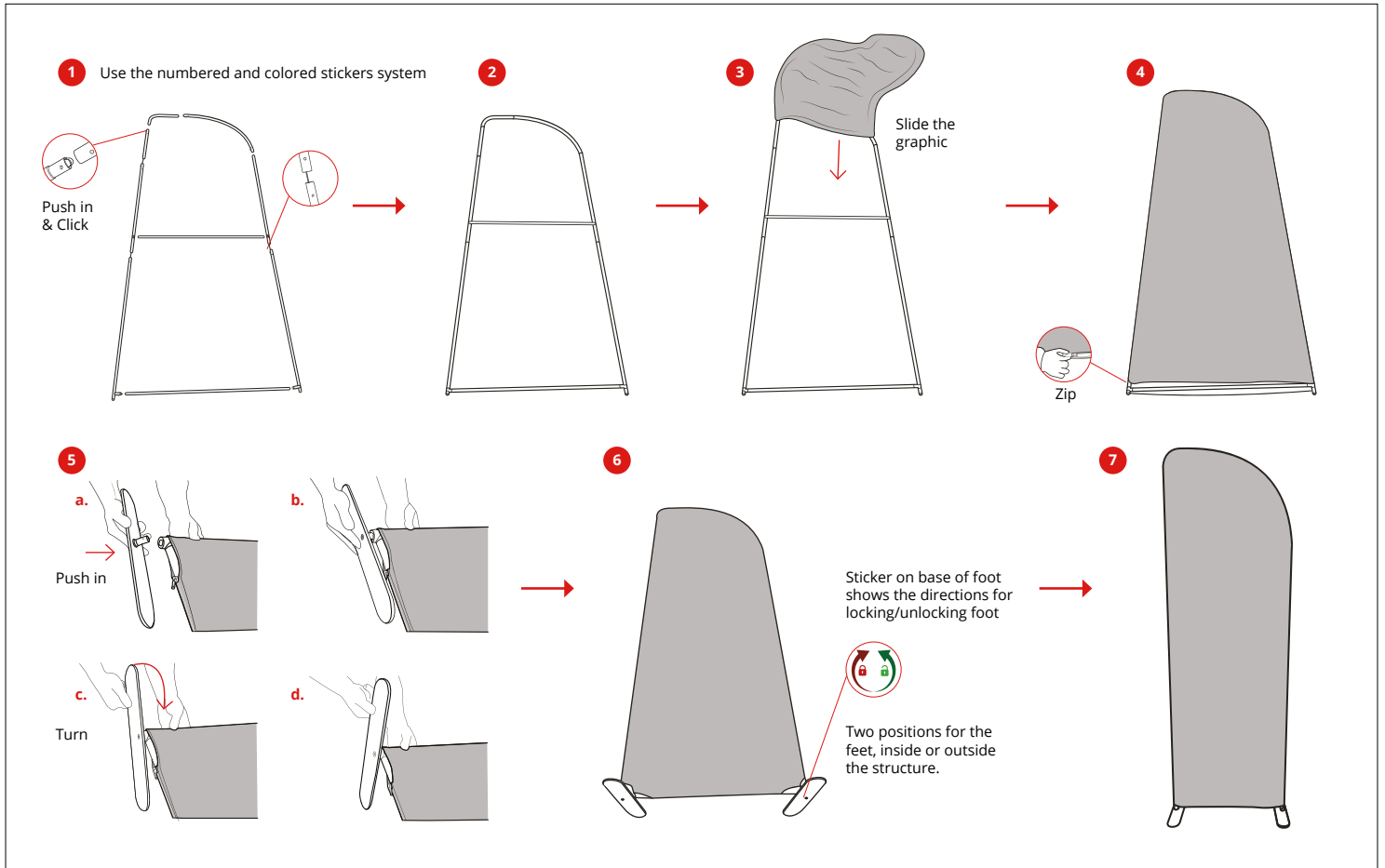
MOD-SS-824-02



## ELEMENTS

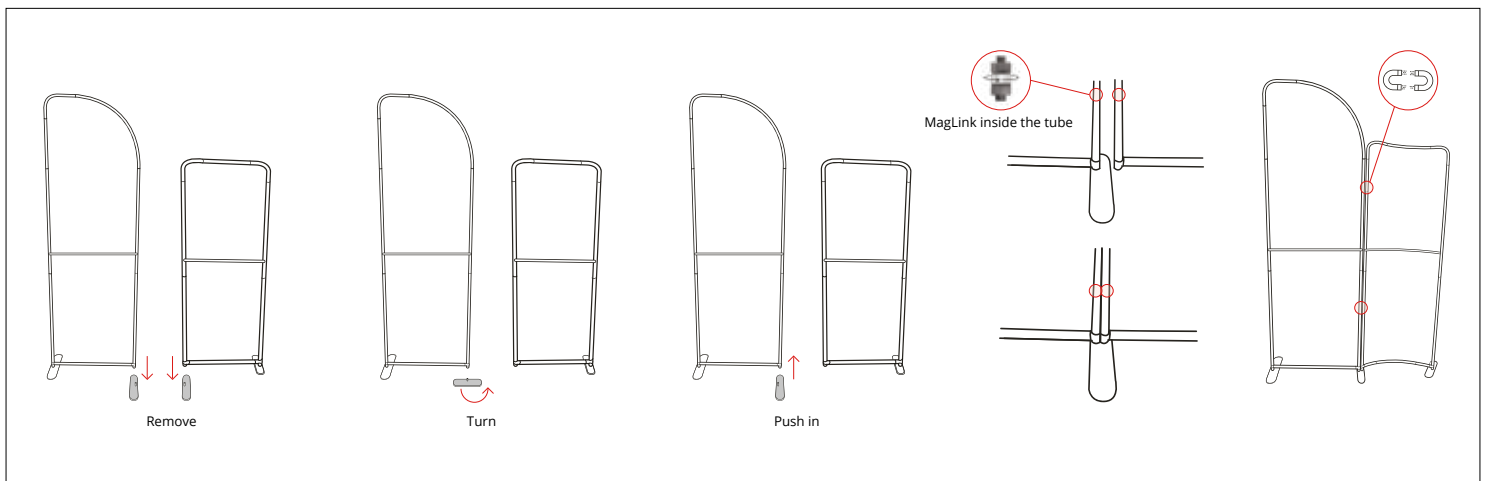


## ASSEMBLY



## CONNECTING MULTIPLE FRAMES

Remove one foot from second frame and align both frames on one foot



MODULATE™