

# Modulate™ Slope 1

MOD-SS-824-01

**Modulate™** consists of a set of frames made from aluminium tubes (Ø30 mm) covered with a printed tension fabric graphic. These frames can be connected together using powerful magnets inside each frame. Modulate range is available in 11 different sized formats.

- Thanks to the exclusive **MagLink** magnetic system built into the structure, you can connect the frames by simply touching them together.
- With the **Twist & Lock** system, simply position the foot under the structure, turn it and it's locked!
- The graphics are very easy to maintain thanks to the crease-resistant and machine washable textile cover. Stretch fabric with zip system.



360° MagLink connector in each pole. 4 magnets per structure



Simple assembly with numbered frame parts



Self-locking system with bungee poles and push-buttons



2 stabilising feet with Twist & Lock supplied with each frame



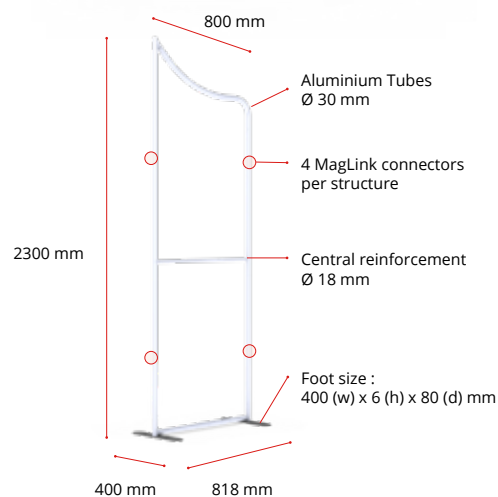
Central reinforcement tube (Ø 18 mm)



**Modulate™** carry bag with dedicated compartments for the feet and graphics



Double-sided tension fabric. Zip system



## Structure informations :

Item	Modulate Slope 1
Code	MOD-SS-824-01
Structure dimensions	818 (w) x 2300 (h) x 400 (d) mm
Graphic visual area	800 (w) x 2282 (h) mm
Boxed dimensions	1000 (w) x 245 (h) x 125 (d) mm
Structure weight	6.60 kg
Boxed weight	6.95 kg

## OPTIONAL ELEMENTS :



Modulate half feet (pair)  
MOD-HALF-FOOT-P  
218 (w) x 6 (h) x 80 (d) mm



Spot LED Flood  
LED-FLOOD-ARM-BDLK

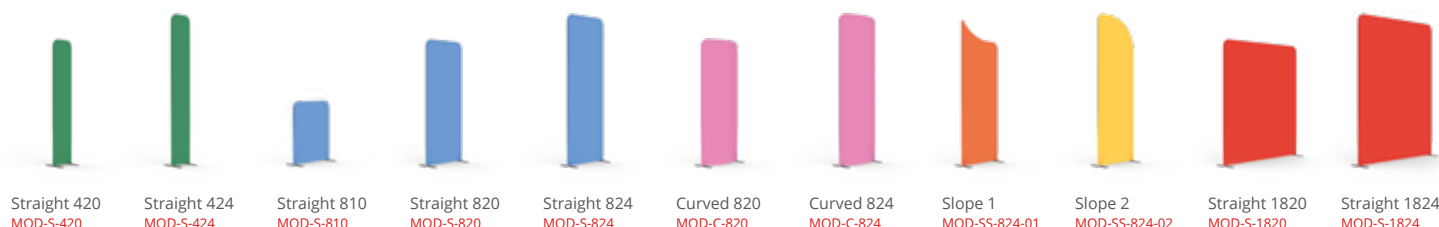


Spot LED Strip  
LED-STRIP-ARM-BDLK



Universal light fitting kit  
US901-C

## MIX & MATCH THE 11 MODULATE FRAMES :

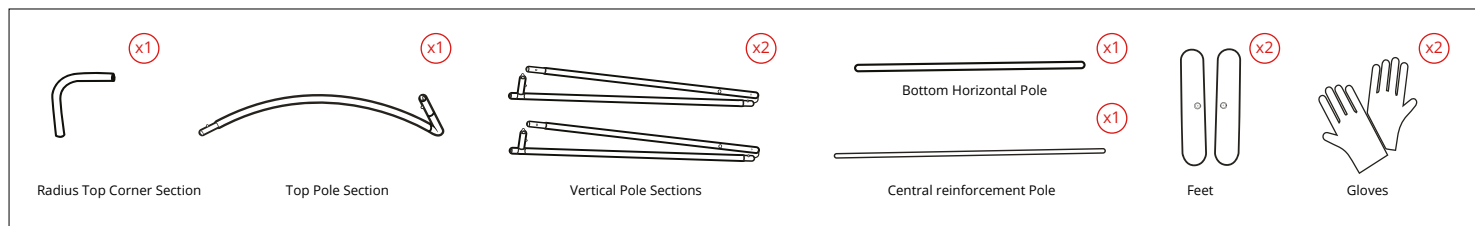


# Modulate™ Slope 1

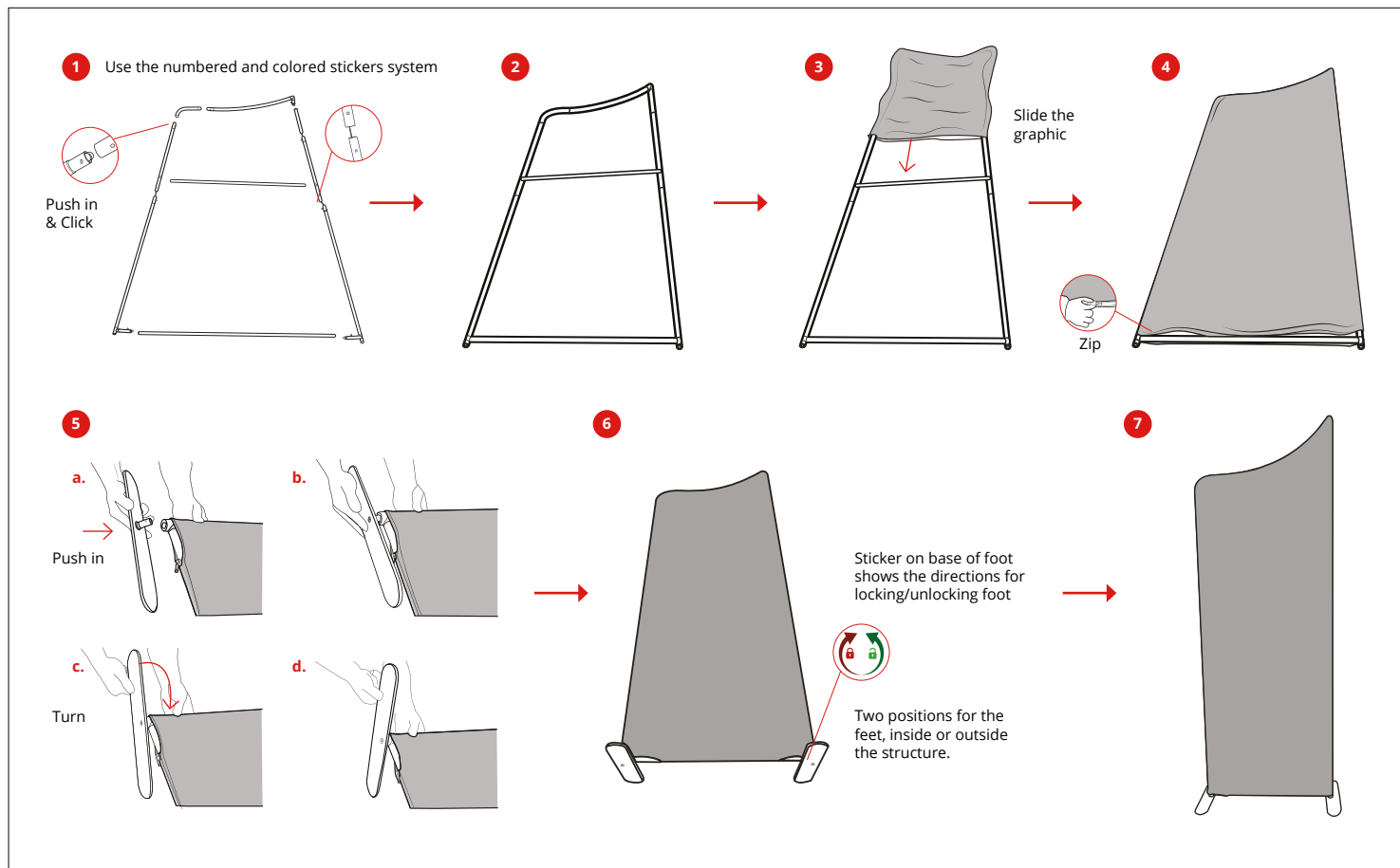
MOD-SS-824-01



## ELEMENTS



## ASSEMBLY



## CONNECTING MULTIPLE FRAMES

Remove one foot from second frame and align both frames on one foot

